

Ducati Diavel Instructions 2016

After Reading and Fully Understanding the Main lift Instructions proceed to securely assemble the Mounts to the Lift as follows.

First, ensure the bike is standing in the vertical position, for this we strongly recommend the use of our **Bikegrab** Wheel chock Stand as it will raise the front wheel of the bike while holding it firmly upright keeping you and the bike safe while setting up the lift.

As shown in **Pic1** **Item A** locate the front “C” shaped mount **40mm** in from the end of the lifting arm and secure with a **13mm** wrench, Now position the rear foot-peg mount assembly **425mm** away, exactly as shown and secure with the **2x 13mm** nuts.

Most important is to locate the lower inner edge of **Item B** @ **70mm** away from the fixing bolt as shown and secure in place.

As we produce a long upper section of the foot-peg mount system (in an effort to suit all bikes) it will be necessary to shorten them by **80mm** as shown in **Pic 4**, this can easily be done with a hacksaw or angle grinder.

Don't worry as these parts are readily available and also inexpensive if you ever need to replace them.

Remove the complete support section “C” from the slotted beam and the lift can now be located in and under the **R/H** side of the bike ensuring that the front mount “A” locates directly behind and firmly up against the exhaust manifold flange as shown in **Pic3**.

Pic 1.



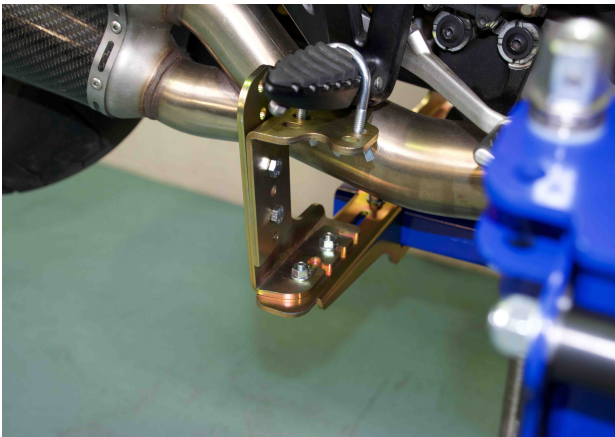
Now take the vertical support section “C” and secure it back to the slotted beam adjusting so the tongue is sitting directly under the bikes L/H footpeg bracket and proceed to secure the “U” bolts with the wing nuts to both sides of the bike as shown in **Pic2**.

After a Final check that everything is “In Place and Secure” it will be safe to raise the lift for working on the bike.

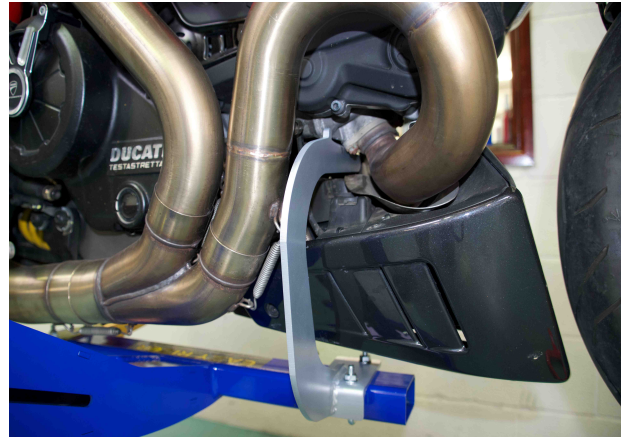
If you are in doubt about anything please contact us or your area distributor for advice.

Do Not take any chances!

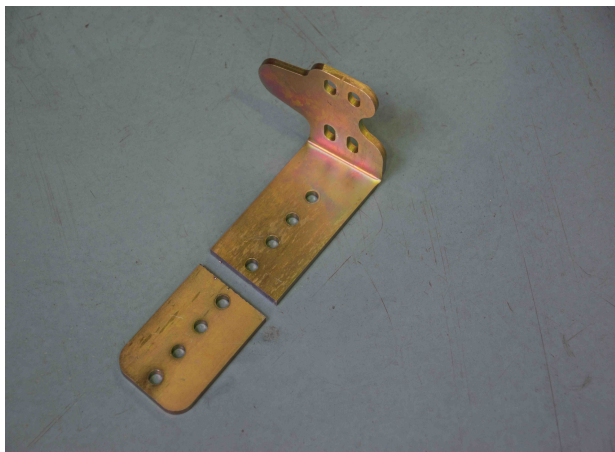
A good tip to avoid marking the bike is to use plastic hose or rubber at points of contact.



Pic 2.



Pic 3.



Pic 4.

Enjoy working in Comfort and Safety on your machine.